



Installing the Opticon Sync App

1. Open Chrome\ Internet Explorer browser window. Copy and Paste URL:
<http://www.data-wize.com/Datawize-Opticon-App-Builder.aspx> and press

enter.



OPTICON

AUTHORISED OPTICON RESELLER

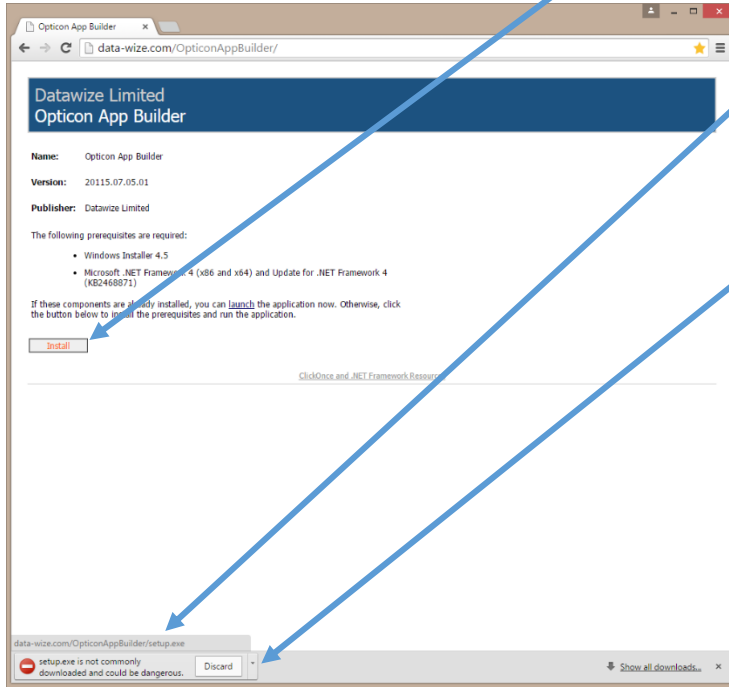
@ cliftonwesby@data-wize.com

☎ 01603 407629

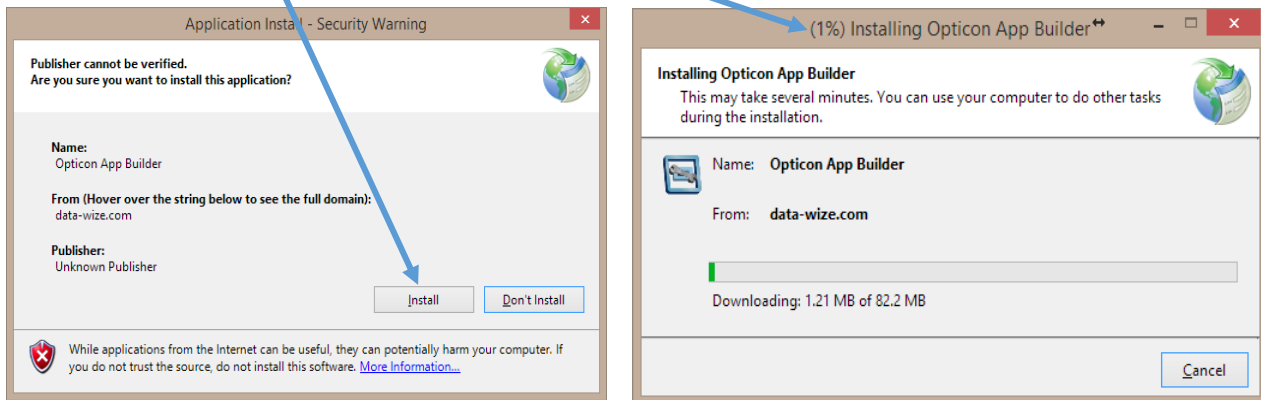
🌐 www.data-wize.com



2. On the Install page, select the **Install** button. The **setup.exe** file will be downloaded with a **Warning: "setup.exe is not commonly downloaded and could be dangerous."** Click on the dropdown arrow and select **Keep**. Select the **setup.exe** tab again



3. Select the **Install** Button. A progress window will appear showing the App Builder installing.



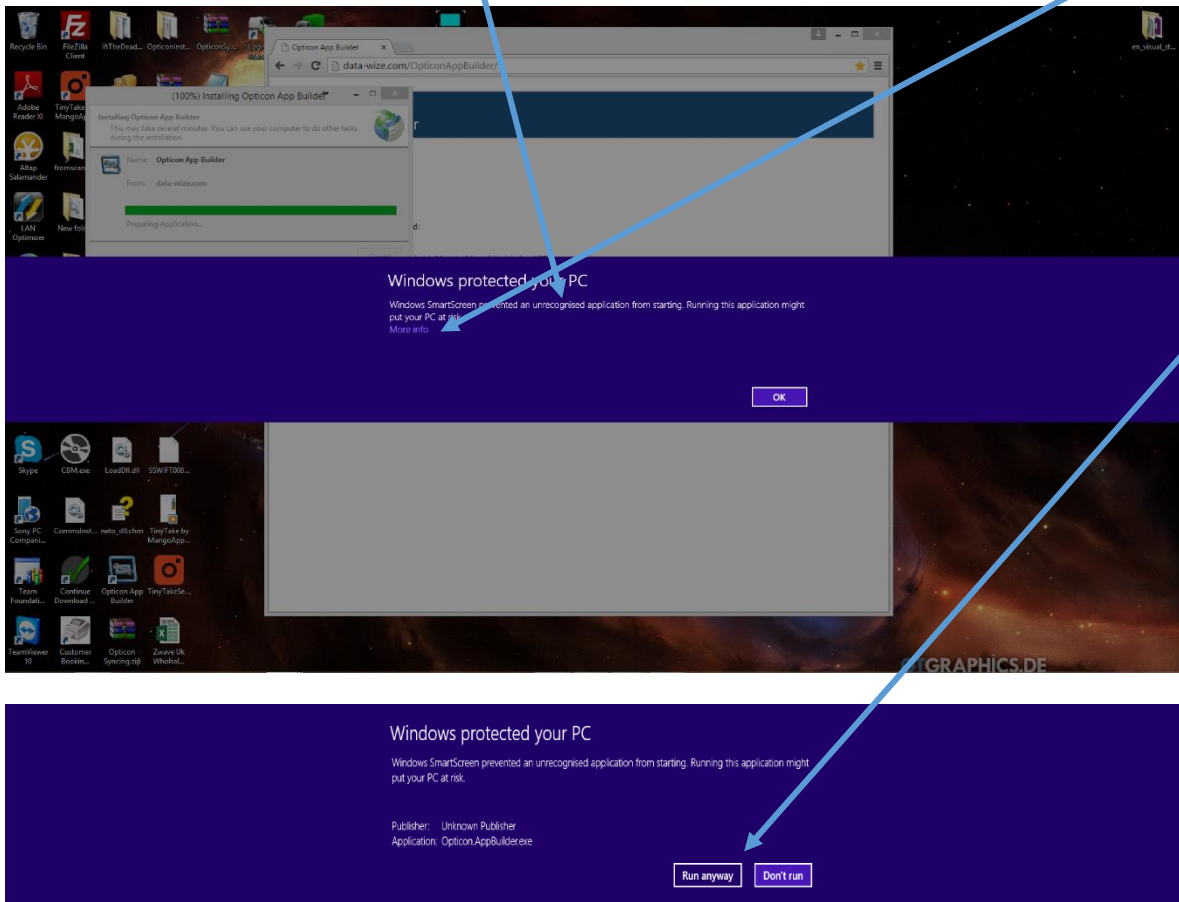
OPTICON

AUTHORISED OPTICON RESELLER



Windows 8 Install

4. On Windows 8 computers, when the Install is complete a purple banner will warn against **“an unrecognized application.”** Select the **“More info”** text. The



banner will change to allow the option to **“Run anyway”** or **“Don't run”**. This is Microsoft's way to ensuring a potential harmful loading of an application is occurring.

5. Select the **“Run anyway”** button.

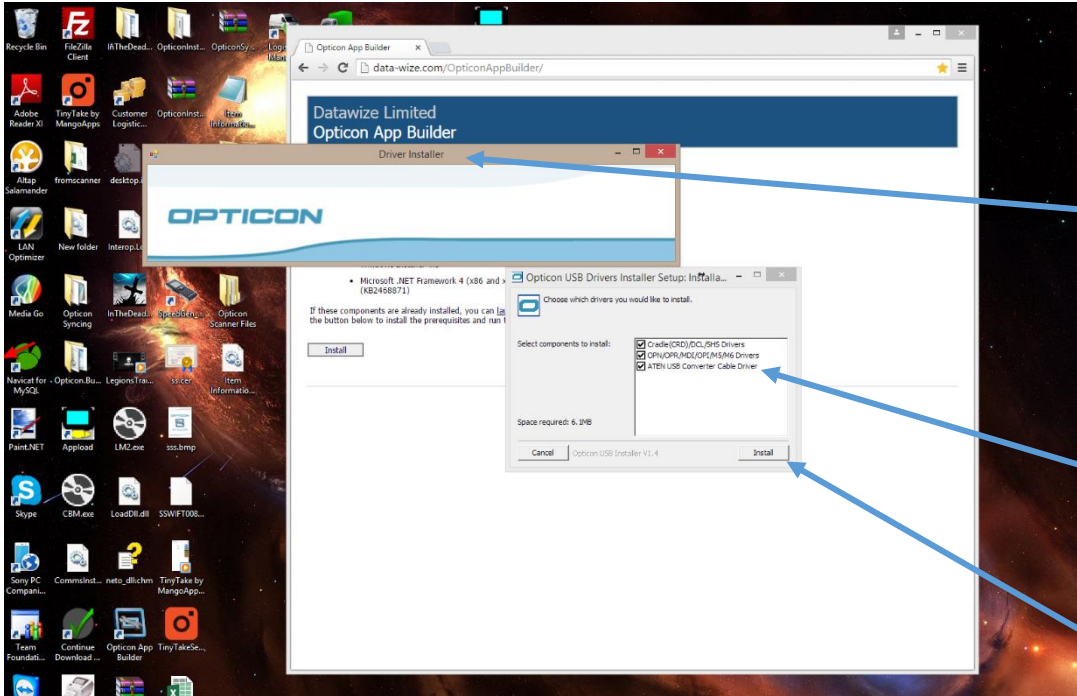
OPTICON

AUTHORISED OPTICON RESELLER

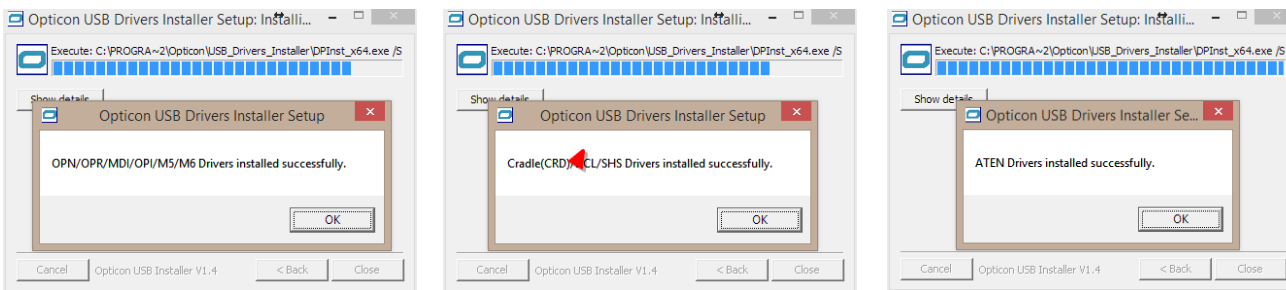


6. On a new Install, it is necessary to install Drivers to allow the scanners to

communicate with the computer. The Driver Installer Window will appear with another window showing 3 drivers checked, that will need to be installed. Click **Install**.



7. Three windows notifications will appear showing the driver installation completion. After accepting each install, the App Builder will be ready for use.



OPTICON

AUTHORISED OPTICON RESELLER